

Certificate Maker[®]

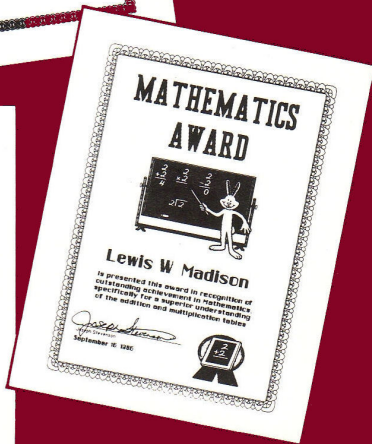
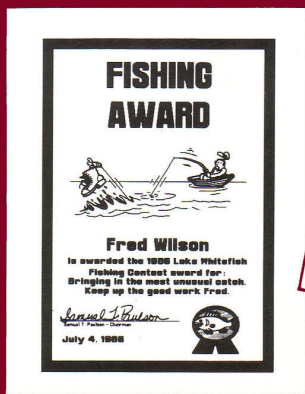


TABLE OF CONTENTS

1 Introduction

- 1 What is Certificate Maker?
- 1 How does it work?
- 2 The elements of a certificate
- 4 Using the keyboard

5 Setting Up and Running Certificate Maker

- 5 Before you start
- 5 Starting Certificate Maker
- 5 Exiting from Certificate Maker

6 Make Certificate

- 6 Flow chart
- 8 Main Menu
- 9 Enter template number
- 10 Select border
- 11 Select title font style
- 12 Enter title text
- 13 Select body font style
- 14 Enter body text
- 15 Enter date line
- 16 Enter signature line
- 17 Select *name* file
- 18 Select names
- 19 Print certificate

21 *Name* File

- 21 Flow chart
- 23 Select *name* file option
- 24 Enter names
- 25 Save *name* file
- 26 Edit *name* file
- 27 Enter name to be added

28 Samples of Borders

30 Certificate Catalog

77 Limited Warranty

Certificate Maker™

©1986 SPRINGBOARD SOFTWARE



Credits:

Springboard Product Development Team is led by Mark Dunn, Vice President of Product Development.

Our programmers are John Borowicz, Sean Callahan, Jon Clauson, Robert Eyestone, Scott McSpadden, and Robert Mueffelman.

Our artists are Robert Cavey, Karen Christiansen, and Jerry Cratsenberg.

READ THIS FIRST

Hardware Requirements

To run Certificate Maker you need an Apple II + , IIe, IIc, IIgs, or compatible computer including:

64K memory

One disk drive

A dot-matrix printer

Optional equipment includes:

A joystick

A second disk drive

A ProDOS data disk

Warning

DO NOT COPY THE MASTER PROGRAM DISK OR THE CERTIFICATE DISK. These disks are copy protected. Attempting to copy these disks could damage them. Backup disks are available directly from Springboard Software; see the Backup Order form included in this package.

How to use this manual

This manual is organized into four chapters:

The **Introduction** provides an overview of the program and explains the uses of various keys on the keyboard.

Setting Up and Running Certificate Maker explains how to install and start the program on your computer.

Make Certificate takes you step by step through the process of creating and printing a certificate.

***Name* File** shows you how to create lists of names that can be merged into your certificates.

As you read the instructions in this manual, there are two conventions to keep in mind:

When there are instructions to **Select** an option, that means you should move the cursor to that option, then press the [return] key.

When there are instructions to **Enter** something from the keyboard, that means you should type the appropriate text, then press the [return] key.

INTRODUCTION

What is Certificate Maker?

Certificate Maker is an easy-to-use program that enables you to create attractive, personalized awards. Even if you have never before used a computer, with Certificate Maker you can make a certificate in only a few minutes--on your first try!

Certificates have always represented a meaningful way to recognize and encourage all kinds of achievements. In the past, however, it has been time-consuming and expensive to purchase or create personalized awards. Now, with Certificate Maker, you can provide specific, immediate, and tangible praise for any occasion. Certificate Maker helps you announce a promotion, recognize the attainment of a goal, give thanks for extra effort, or even poke fun at a dubious achievement.

There are dozens of uses for Certificate Maker: Teachers can reward students for excellence in the classroom.... Parents can acknowledge admirable behavior in their children.... Club leaders can recognize the extra efforts of volunteer workers.... Bosses can bestow honors for excellence to their employees....

How does it work?

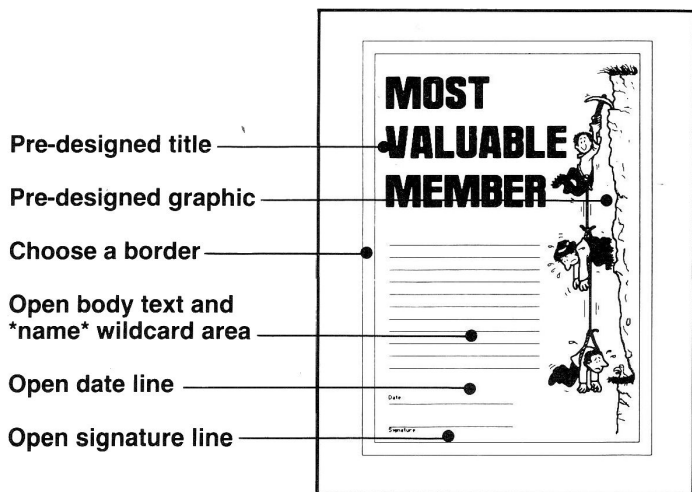
Certificate Maker does the hard part for you: It provides more than 200 professionally designed, partially-completed certificates, called templates. Some templates are intended for specific occasions such as academic achievement, sporting triumphs and so on; these include a title and appropriate artwork. Other templates are multi-purpose; they have no artwork and only a partial title like *Certificate of...*

To make a certificate, all you have to do is select the template you want (illustrations of all the templates appear in the Certificate Catalog at the back of this book), choose a border and type style, and fill in the blanks with the recipient's name and achievement. As a finishing touch, you can add one of the 36 seals and stickers that come with Certificate Maker.

For those occasions when you want to present personalized certificates to several people, Certificate Maker has a feature called the **name* wildcard* that lets you insert names into otherwise identical certificates.

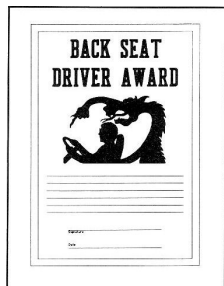
The information you enter is added to a template when you print the certificate. The templates themselves remain intact and can be used over and over.

The elements of a certificate

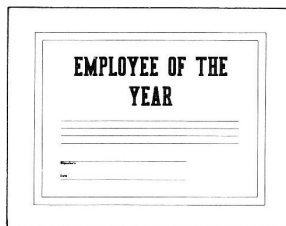


certificate formats

Vertical



Horizontal



Small



As you can see on the illustration on the opposite page, there are four parts to a certificate:

Title: Some templates include a complete title such as *Mathematics Award* or *Most Valuable Member*, while other templates provide a partial title like *Certificate of...*, or a completely blank title area.

Graphics: Many templates include an illustration to spice up the certificate and add that professional, or humorous, touch.

Border: There are 24 designs to choose from. Samples of each border appear on a special Border menu at the back of this book.

Text: Every template provides space where you can type in specific information about an award. Most templates also include a line for the date and your signature. Certificate Maker has five font styles and two font sizes from which you may choose.

Entering the special code **name** in your text instructs Certificate Maker to print the same certificate several times, with a different name on each copy.

A separate procedure allows you to create “name” files containing the names of the people in your office, classroom, or organization. Just before you print a certificate that has the **name** wildcard in it, the program asks you to choose the names you want to use.

Using the keyboard

The following table shows the keys used in Certificate Maker.

Function	Key	Description
Select	[return]	Use [return] to select an item from a menu or a list of options. When entering text, use [return] to end one line and begin the next.
Go back to the previous screen	[esc]	Use [esc] to cancel your work on one screen and return to the previous screen. When entering text, use [esc] to delete the text on the current line and move the cursor back to the previous line.
Return to the Main Menu	[control-R]	Use [control-R] (hold down [control] and press R simultaneously) at any time to cancel your work and return to the Main Menu. From there, you can start over or exit from Certificate Maker.
Move the cursor	→ ← ↑ ↓	Apple IIe/c: Use the up and down arrow keys to move from one item to another in a menu or a list of options. Apple II + : Use ← for up and use → for down
Making typing corrections	[backarrow] [delete]	Use the backarrow or delete key to erase characters to the left of the cursor.
Upper/lower case	[shift] [control-C]	Apple IIe/c: Use the [shift] and any other key for upper case. Apple II + : Use [control-C] (hold down [control] and press C simultaneously) at any time to toggle between upper case and lower case.

SETTING UP AND RUNNING CERTIFICATE MAKER

Before you start:

If you plan to use the *name* wildcard feature, initialize a floppy disk for *name* file storage. Use ProDOS to initialize your disk.

Name files must be stored on a separate floppy disk. They cannot be kept on the Certificate Maker Master Program disk or the Certificate Catalog disk. A single floppy disk can hold all your *name* files.

To start Certificate Maker:

Insert the Master Program disk in drive 1 and turn on your computer.

If you have two disk drives, insert the Certificate Catalog disk in drive 2.

To exit from Certificate Maker:

1. Return to the Main Menu by pressing [Ctrl-R].
2. Select the Exit Program option (if you want to run another software application), or turn off your computer.

MAKE CERTIFICATE

This chapter describes how to create and print out a certificate. At the top of each page, the entry screen is numbered in the order in which you will use it. The screen numbers enclosed in parentheses are optional or only appear in certain cases. Follow this flow chart for quick reference.

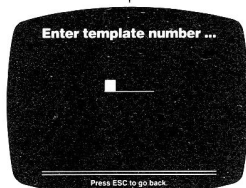
1



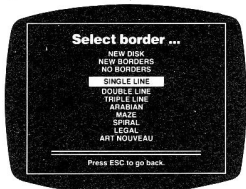
Name File: Go to *Name* File creation on page 21.

Make Certificate: Go to Screen 2.

2



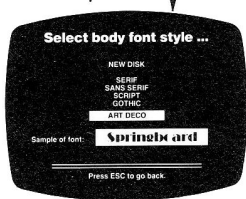
3



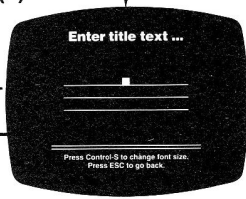
(4)



6 Complete



(5)

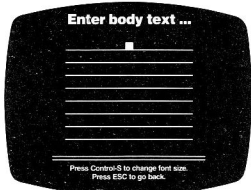


Blank

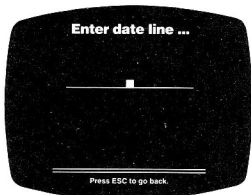
Partial

Continued on next page.

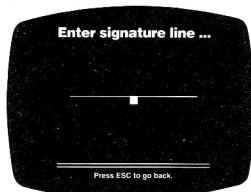
7



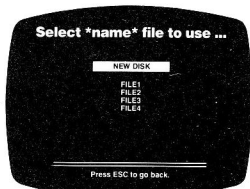
8



9



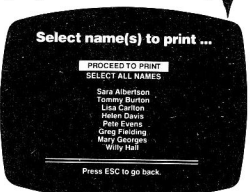
(10) If *name* in any text area.



12



(11) If *name* in any text area.



1 Main Menu



Select **Make Certificate** if you want to create a certificate.

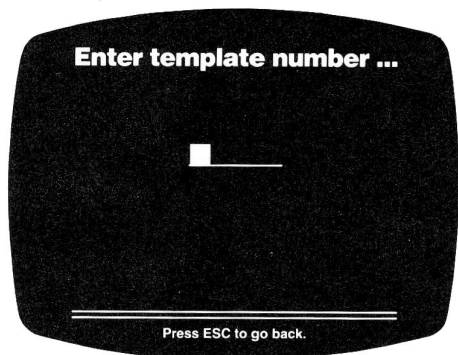
Select ***Name* File** if you want to create or edit a list of names. A **name** file list can be merged into a certificate to produce several personalized copies of the same certificate. The program goes to Screen A, Select **name** file option (page 22).

*Note: This option is used to add or delete names from a *name* file, not to select the names to be printed on any given certificate. Actual name selection is done in the Make Certificate procedure.*

Select **Exit Program** to leave Certificate Maker and return to ProDOS.

No matter where you are in Certificate Maker, you can press [Ctrl-R] to Return to this menu.

2 Enter template number



Enter the number of the certificate template you want to create.

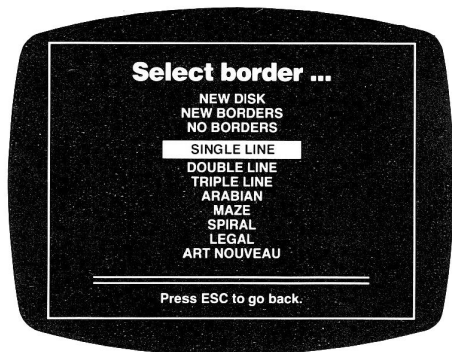
Templates 1-39 are on Disk 1, Side B.

Templates 40-127 are on Disk 2, Side A.

Templates 128-220 are on Disk 2, Side B.

Illustrations of the certificates and their corresponding numbers appear in the *Certificate Catalog* at the back of this book.

3 Select border



Select the border for the certificate.

A border is a design that goes around the edge of a certificate. There are 24 borders from which you may choose; 8 border names are listed at a time. As you move the cursor through the list of border names, the borders are displayed on the screen. When you see the border you want, select it.

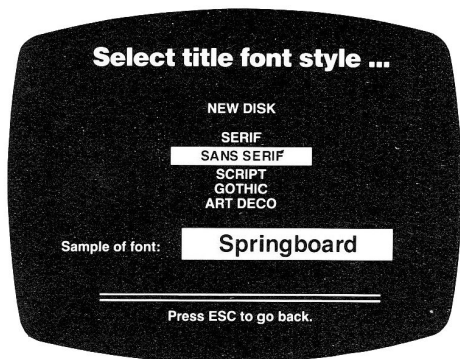
Samples of the borders appear at the back of this book.

Select **More Borders** to see the lists of the next 8 borders.

Select **No Border** to make a certificate with no border.

Select **New Disk** to access the borders on Certificate Library Volume 1. Certificate Library Volume 1 is a separate product that contains 24 new borders, more than 100 new certificates, and six dozen stickers.

(4) Select title font style



Select the font style you want for the certificate title.

This screen appears only if the certificate has space for you to enter a title *and* if that area is completely blank. (Examples: Certificates 218 and 219.)

If there is space for you to enter a title, but the title area already has some text, such as *Certificate of...* or *The World's Best...*, then the title font style is chosen by the program to match the text already in place.

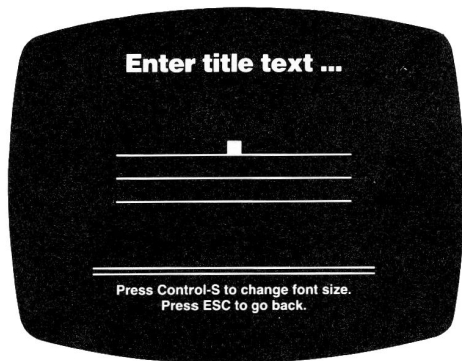
As you scroll through the list of five font names, you can see a sample of each font at the bottom of the screen. The fonts are:

This is SERIF.
This is SANS SERIF.
This is SCRIPT.
This is GOTHIC.
This is ART DECO.

The font style appears only on the printed certificate, not on the screen while you are entering the title.

The **New Disk** option is reserved for future additions to Certificate Maker.

(5) Enter title text



Enter a title for your certificate.

This screen appears only for those certificates that have space set aside for you to enter a title.

You may press [Ctrl-S] to toggle the **font size** between small and medium. The cursor will change size to show the selected size. If you enter some text on a line and then press [Ctrl-S], the size of the text on that line will change. All the text on any given line must be the same size, but you can change the size from one line to the next.

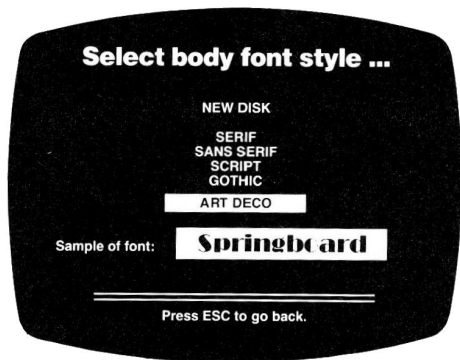
The **number of lines on the screen** indicates how many lines of text you may enter for the title. The number may change depending on the font size you select. These lines do not appear on the printed certificate.

As you type, the **title is centered** on each line.

Note for **multiple-line titles**: While word wrap does work, you may also press [return] to move the cursor from one line to the next.

Pressing [return] on the last line **ends the title entry**.

6 Select body font style



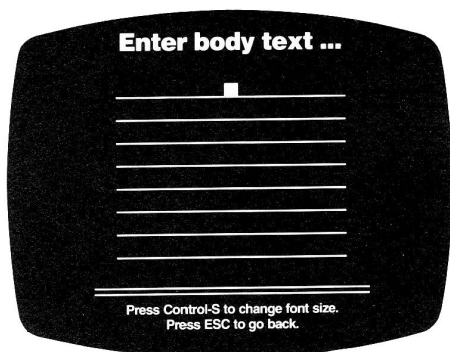
Select the font style you want for the body of the certificate. As you scroll through the list of font names, you can see a sample of each font at the bottom of the screen. The fonts are:

This is SERIF.
This is SANS SERIF.
This is SCRIPT.
This is GOTHIC.
This is ART DECO.

The font you choose for the body text will also be used for the date text (Screen 8). You may choose any of the five fonts, regardless of the font used for the certificate title. Usually, a certificate looks best when you use the same font for both the title and the body text.

The **New Disk** option is reserved for future additions to Certificate Maker.

7 Enter body text



Enter the text you want to appear in the body of the certificate.

There are two font sizes available for the text. Pressing [Ctrl-S] toggles the **font size** between medium and small; the cursor will change size accordingly. All the text on a given line must be the same size, but you may change font size from one line to the next. If you enter some text on a line and then press [Ctrl-S], the size of the text on that line will change.

While **word wrap** does work, you may also press [return] to move the cursor from line to line.

The **number of lines on the screen** indicates how many lines of text you may enter. The number may change depending on the font size you select. These lines do not appear on the printed certificate.

The **text is centered** on each line.

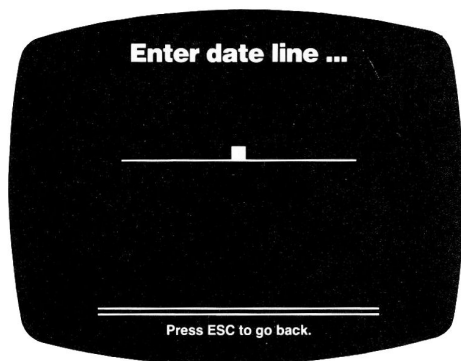
To make **typing corrections**, use the [backarrow] and [delete] keys. To delete an entire line of text, press [esc].

Pressing [return] on the last line **ends the text entry**.

To personalize several copies of the certificate:

Type ***name*** all by itself on the line where you want each name to appear. Don't put any other text on the line that has the ***name*** wildcard. Just before you print the certificate, the program will ask you what ***name*** file and which names from that file that you want to use. See Screens A-E for instructions on creating a ***name*** file.

8 Enter date line



Enter the date text you want to appear on the certificate.

Entering a date is optional. You may decide to leave the date area blank, or you may enter some text other than a date. The line and the word "date" that you see on the template do not appear on the printed certificate.

Because of the amount of space available, not all certificates have enough room to spell out an entire date such as "September 23, 1987." The amount of space allowed for the date is indicated by the length of the line on the screen.

The font style for date text is the same as what you chose for the certificate text on Screen 7. The font size is small and cannot be changed.

Date text examples:

January 1, 1999

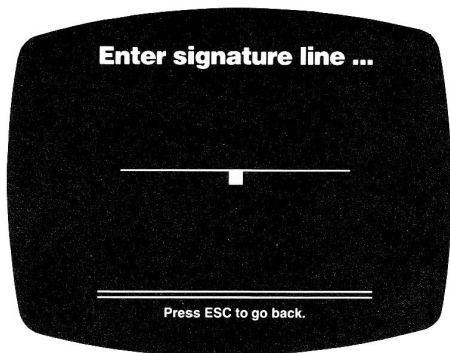
7/18/89

Date: _____

name

Whatever you want...

9 Enter signature line



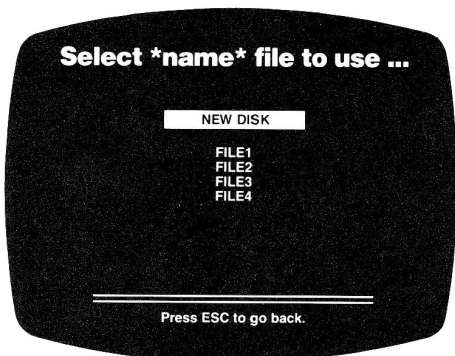
Enter the signature text you want to appear on the certificate.

All certificates include a pre-drawn line on which you can sign your name; the length of the line cannot be changed. The word "signature" beneath the signature line is replaced on the printed certificate by what you enter on this screen.

Signature text is centered beneath the signature line. If you want to move the text to the left, use [Space] to enter some spaces at the end of your name.

There is only one font for signature text. It is a special font that appears only in the signature area.

(10) Select *name* file



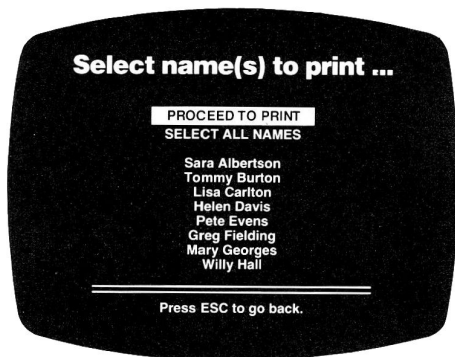
This screen appears only if the body text you entered in Screen 7 has the ***name*** wildcard. See Screen 7 for instructions on entering the ***name*** wildcard, and see Screens A-E for instructions on creating and editing a ***name*** file.

Select the ***name*** file from which you wish to draw names to be printed on several copies of the certificate.

If you have not done so already, the program will ask you to insert a ***name*** file disk into the appropriate disk drive.

Insert a new disk, then select **New Disk** if the ***name*** file you want is on a different disk.

(11) Select names



Select **Select all Names** if you want to print a certificate for every name in the file. An asterisk will appear to the left of each name.

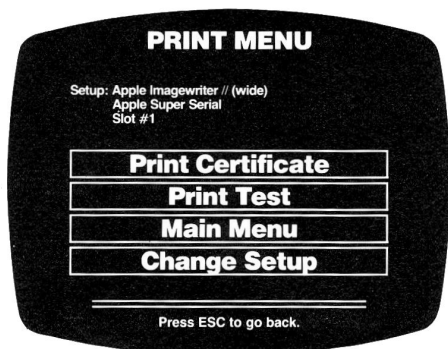
Select this option also if you want to select most but not all names from the list. Then move the cursor to the names you *don't* want and press [return] to delete those names.

Select the **individual names** if you want to print certificates for only a few of the names in the file. An asterisk will appear next to each name you select.

To remove a name accidentally selected, move the cursor to the name and press [return].

Select **Proceed to Print** when you are done selecting names.

12 Print certificate



Select **Print certificate** if the printer name displayed is the name of your printer, and if you are sure that the paper is adjusted properly in the printer.

Until you become familiar with how to align the paper for the various certificate formats, it is a good idea to select the Print Test option (described on the following page) before printing a certificate.

The format of each certificate (horizontal, vertical, or small) is as shown in the Certificate Catalog and cannot be changed.

If you are using a color printer that is supported by Certificate Maker, the program will display two menus, one for a border color, and one for text and graphics color.

If your text has a ***name*** wildcard, the program will print one certificate for each name you specified on Screen 11. If the ***name*** certificates are horizontal or vertical, the program will advance the printer to the top-of-form after each certificate is printed. If the ***name*** certificates are the small format, the program will print them two to a page.

Note: The program will print about one-third of the certificate at a time, then pause for a few moments before continuing. Don't worry when your printer stops before printing the entire certificate.

When the printing is done, the program returns to the Print Menu. This gives you a chance to print the certificate again.

Select **Print Test** if you want to find out where on the paper the certificate will print. The program will print a four-corner test pattern of the certificate; this saves you from printing the entire certificate when you are not sure if the paper is aligned properly. This option is particularly recommended the very first time you use Certificate Maker and on all occasions when you are printing several *name* certificates.

Print Test is also helpful when you want to make sure that you have selected the right printer in the Change Setup procedure.

Select **Main Menu** if you want to start over or quit Certificate Maker. The information you have entered in Screens 2-11 will be lost.

Select **Change Setup** if the printer setup displayed does not describe your printer. *NOTE:* Apple IIc users must change the setup the first time to accommodate the IIc serial port. The program will display an alphabetical list of all the printers that can be used with Certificate Maker.

Scroll through the list until you find your printer, then select it. The program may have you respond to one or more questions regarding the specific configuration of your printer.

You will have to do the Change Setup procedure only the first time you print a certificate (and again if you ever use Certificate Maker with a different printer). Once you have specified your type of printer, the program remembers it.

Printer Tips

If printing from a *name* file using two disk drives: Insert the *name* data disk into drive 2 when prompted to do so, before selecting the names to print. Insert the Certificate Maker disk in drive 1 when prompted to do so, after selecting the **Print Certificate** option. This avoids frequent disk swapping during printing.

If the printer skips lines while printing a certificate, turn off the automatic linefeed setting on your printer. See your printer manual for instructions. (Note: Some of the Change Setup procedures allow you to turn off linefeed without physically adjusting your printer.)

If the printer doesn't work, turn it off and back on again, then go through the Change Setup procedure. If that doesn't help, compare your DIP switch settings to those recommended in your printer manual.

NAME FILE

This chapter explains how to create a new *name* file and how to edit an existing *name* file. At the top of each page, the entry screen is lettered in the order in which you will use it. Follow this flow chart for quick reference.

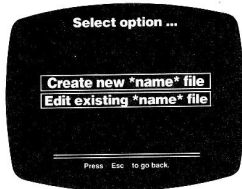
Create new *name* file

1



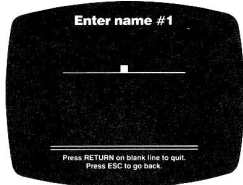
Select: *Name* File

A



Select: Create new *name* file

B



C



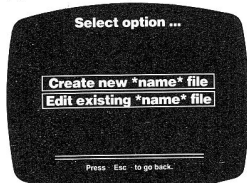
Edit existing *name* file

1



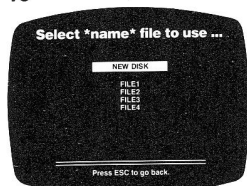
Select: *Name* File

A

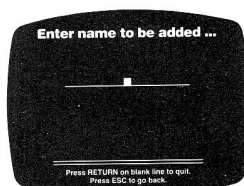


Select: Edit existing *name* file

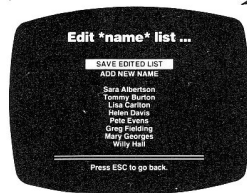
10



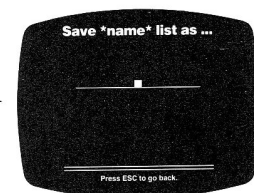
E



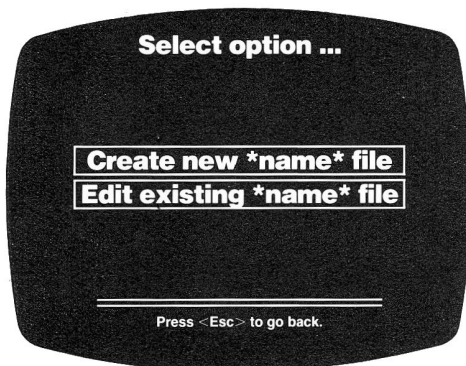
D



C



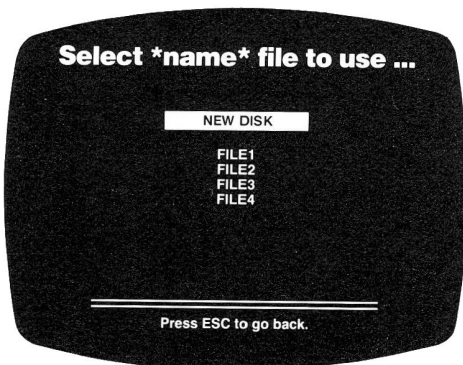
A Select *name* file option



This is the first screen you see when you select the *Name* File option from the Main Menu.

Select **Create new *name* file** if you want to make a new list of names. The program goes to Screen B, Enter Names.

Select **Edit existing *name* file** if you want to make additions, corrections, or deletions to an existing file. The program goes to the **Select *name* file** screen, as shown below.



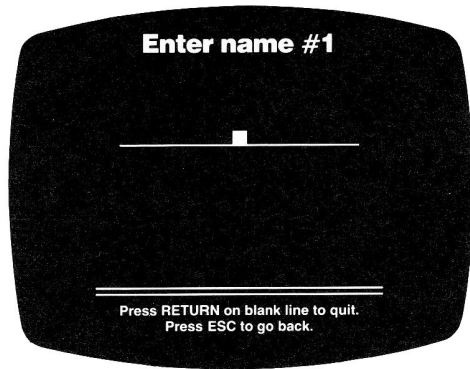
Select the *name* file you want to edit.

If you have not done so already, the program will ask you to insert a *name* file disk into the appropriate disk drive.

The program goes to Screen D, Edit *Name* File.

Change the disk in the disk drive, then select **New Disk** if the *name* file you want is on a different disk.

B Enter names



Enter each name that you want to appear in the file. Each file may contain up to 75 names. As you enter names, the number at the top of the screen indicates how many names are in the file.

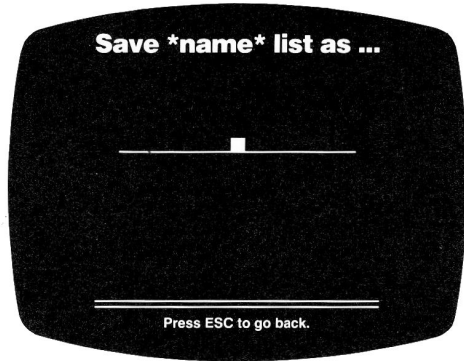
Each name in the list can be up to 25 characters long. Within that limit, each name may contain as many words as you like. Enter each name as you want it to appear on the certificate (e.g., *Mary Smith* not *Smith, Mary*).

Make sure the name is correct before you press [return]! Once you press [return], the only way to correct a name is through the **Edit existing *name* file** procedure (Screen D). To make corrections use the [backarrow] or [delete] key as described in the Introduction.

The order in which you enter names is not important. When you save a *name* file, the program automatically alphabetizes the list by the last word you enter.

When you are done entering names, press [return] when the entry line is blank.

C Save *name* file



Enter a name for the *name* file. Choose a name that will help you remember the contents of the file.

***Name* files have filename prefixes, but the prefixes are assigned by the program automatically. You cannot include a filename prefix when naming a *name* file.** The prefix assigned by the program is CMN (CMN.FILENAME). The only time you will need to use the filename prefix is when you are copying or deleting a file in ProDOS.

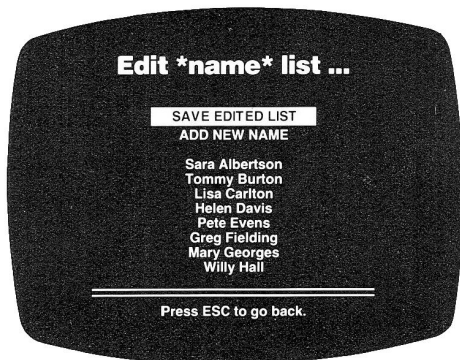
Name files must be saved on a data disk. Never save a *name* file on the Certificate Maker Master Program or Certificate disk. If you have more than one disk drive, the program displays a message reminding you which drive to use.

If you are saving an edited file, you can keep both the original and edited versions of the file by assigning a new name to the file, or you can get rid of the original version by assigning its name to the edited version.

For more information on disks, filenames, and filename prefixes, see your ProDOS manual.

When the file has been saved, the program returns to Screen 1, the **Main Menu**.

D Edit *name* file



Select **Add new name** if you want to add one or more names to the file. The program goes to Screen E, **Enter name to be added**.

Select a **previously entered name** if you want to delete that name from the list. As you scroll through the list of names, each name is highlighted, and the word **Delete** appears next to it. When the name you want to delete is highlighted, press [return].

You cannot edit a previously entered name. Thus, in order to change *Mray Msith* to *Mary Smith*, you must first delete the incorrect name, then select **Add new name** and enter the correct name.

Select **Save edited file** when you are done editing the file. The program goes to Screen C, **Save *name* file**.

E Enter name to be added



Enter each name you want to add to the file. Remember, each name can be up to 25 characters long, and there is a maximum of 75 names per file.

To make corrections, press [backarrow] or [delete] before pressing [return]. Once you have entered a name, you can correct it only from Screen D, **Edit *name* file**.

When you are done entering names, press [return] when the entry line is blank. The program goes to Screen D, **Edit *name* file**. From there, you can save the file.

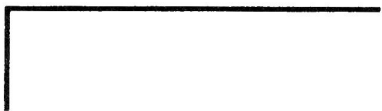
On Screen D, the names you added will appear at the end of the list. Then, when you save the file, the names will be arranged in alphabetical order.

24 BORDERS TO CHOOSE FROM

Single Line



Double Line



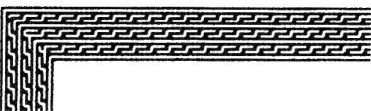
Triple Line



Arabian



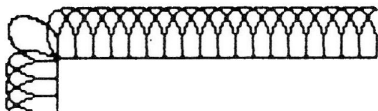
Maze



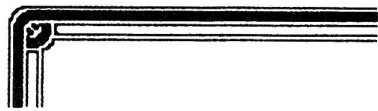
Spiral



Legal



Art Nouveau



Victorian



Lace



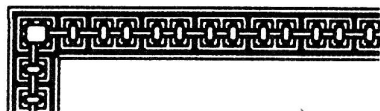
King Arthur



Persian



Links



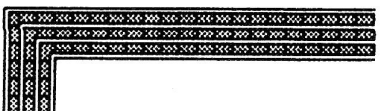
African



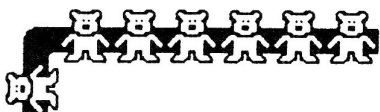
Gothic



Weave



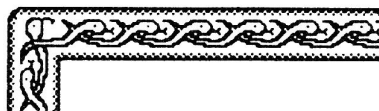
Bear



Heart



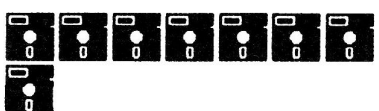
Snake



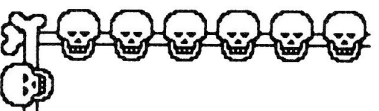
Egyptian



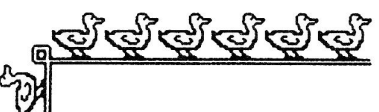
Disk



Skull



Duck




Smile



1


MOST VALUABLE MEMBER



Signature _____
 Date _____

2


BAD HAIRCUT AWARD




Signature _____
 Date _____

3

AWARD FOR QUITTING SMOKING




Signature _____
 Date _____



4


RUDE AWAKENING AWARD



Signature _____
 Date _____

5

**COUCH
POTATO
AWARD**



Signature _____
Date _____

6


**BACK SEAT
DRIVER AWARD**




Signature _____
Date _____

7


*Can of Worms
Award*



Signature _____ 
Date _____

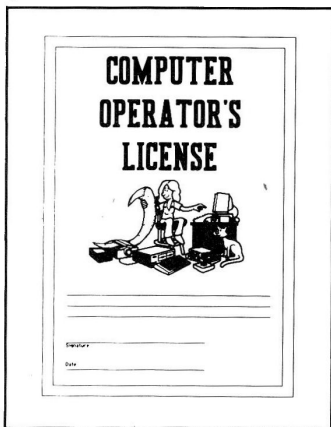
8

**AWARD FOR
Painting
Yourself into
a Corner**

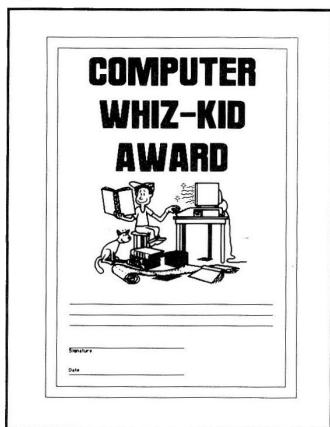


Signature _____ Date _____

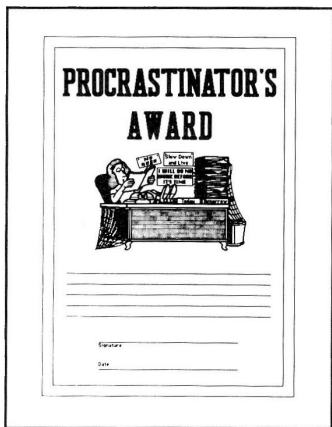
9



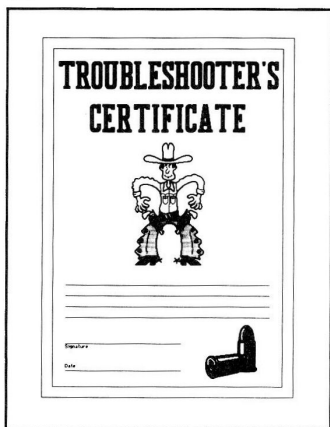
10



11




12



13


**COOLNESS
UNDER
PRESSURE**



Signature _____
Date _____

14


**"STICKING TO
YOUR GUNS"
AWARD**



Signature _____
Date _____

15


**LEMON
AWARD**



Signature _____
Date _____

16

WANTED



Signature _____
Date _____

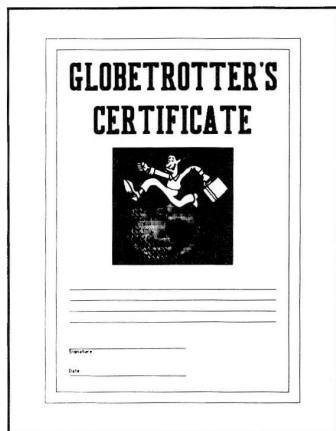
17



18



19




20



21

**MR. KNOW-IT-ALL
AWARD**



Signature _____
Date _____

22

*Best Kisser
Award*



Signature _____
Date _____

23


**SWEET TOOTH
CERTIFICATE**




Signature _____
Date _____

24

**BEER
CONNOISSEUR'S
LICENSE**



Signature _____
Date _____



25

**WINE TASTER'S
CERTIFICATE**




Signature _____
Date _____




26

**WINE
CONNOISSEUR'S
CERTIFICATE**




Signature _____
Date _____




27

Pigsty Award




Signature _____
Date _____



28

**OUT ON A
LIMB**



Signature _____
Date _____

29


**BEST VACATION
PICTURES AWARD**



Signature _____
Date _____

30

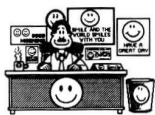
**PHOTOGRAPHER'S
AWARD**



Signature _____
Date _____

31


**CHEERFULNESS
AWARD**




Signature _____
Date _____

32

**WHAT WILL I
BE WHEN I
GROW
UP ?**




Signature _____
Date _____



33


**DRIVER'S
LICENSE**



Signature _____
Date _____

34


**INFECTING
CO-WORKERS**




Signature _____ Date _____
Signature _____ Date _____

35

**Quack
License**




Signature _____
Date _____



36


**OUTSTANDING IN
YOUR FIELD**



Signature _____
Date _____

37


**MOST VALUABLE
PLAYER**



Teacher _____
Date _____

38

**LEAST VALUABLE
PLAYER**




Teacher _____
Date _____

39

**Horrible
Mention**


Teacher _____
Date _____



40

*Thanks for
Nothing Award*

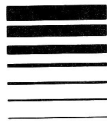

Teacher _____
Date _____



41


Certified Idiot

Signature: _____
Date: _____



42


Foot in Mouth Award



Signature: _____ Date: _____

43

BIG MOUTH AWARD




Signature: _____ Date: _____

44

MURPHY'S LAW DEGREE

Date: _____
Signature: _____



45

**COMMUNITY SERVICE
AWARD**


Signature _____
Date _____



46


**OUTSTANDING
ATTITUDE**

Signature _____
Date _____

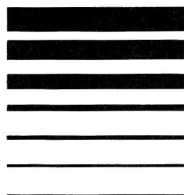


47

The
**Widest, Thinnest,
Tallest, Smallest**
Award




Signature _____ Date _____




49

**Dead Carp
Award**




Signature _____
Date _____



48

Nicest Smile

Signature _____
Date _____



50



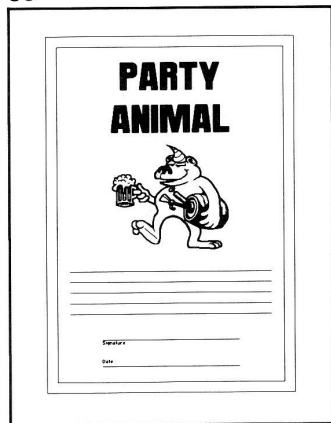
52



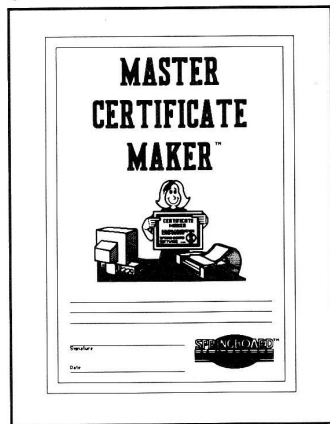
51



53




54




55

**COMPANY
CLOWN**



Signature _____
Date _____



56

**BEST BOSS
AWARD**



Signature _____
Date _____

57

**BEST BOSS
AWARD**



Signature _____
Date _____

58

**BEST SECRETARY
AWARD**




Signature _____
Date _____




59

**BEST SECRETARY
AWARD**




Signature _____
Date _____




60

**Most
Coffee Breaks
Award**



Signature _____
Date _____



61

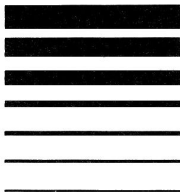
**Certificate
of
Promotion**

Signature _____
Date _____

62

**EMPLOYEE OF THE
WEEK**

Signature _____
Date _____



63

EMPLOYEE OF THE MONTH

Signature _____
Date _____


64


EMPLOYEE OF THE YEAR

Signature _____
Date _____

65

READING AWARD






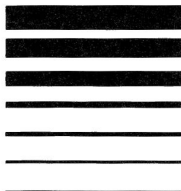
Signature _____
Date _____

66

**Certificate of
READING PROFICIENCY**



Signature _____
Date _____



67

**WRITING
AWARD**



Signature _____

Date _____


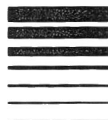


68

**Certificate of
WRITING PROFICIENCY**


Signature _____

Date _____


69

**MATHEMATICS
AWARD**



Signature _____

Date _____




70

**Certificate of
MATHEMATICS SKILLS**

Signature _____

Date _____




71


**Certificate of
ART PROFICIENCY**

Signature _____


Date _____



72

Certificate of MUSIC PROFICIENCY	
_____ _____	
Signature _____	
Date _____	

73

Certificate of GEOGRAPHY SKILLS	
_____ _____	
Signature _____	
Date _____	

74

Certificate of SCIENCE PROFICIENCY	
_____ _____	
Signature _____	
Date _____	

75

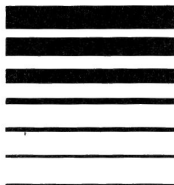
Certificate of SPELLING PROFICIENCY	
_____ _____	
Signature _____	
Date _____	

76

Certificate of HISTORY PROFICIENCY	
_____ _____	
Signature _____	
Date _____	

77

Certificate of SOCIAL STUDIES PROFICIENCY	
_____ _____	
Signature _____	Date _____




78

**Certificate of
PHYSICAL EDUCATION
PROFICIENCY**

Signature _____ Date _____

79

CLASS CLOWN



Signature _____ Date _____

80

**Certificate
of
Scholastic Achievement**

Signature _____ Date _____ 

81

**Certificate
of
Graduation**

Signature _____ Date _____ 

82

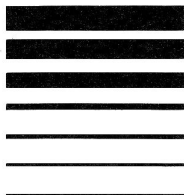
A diploma form with a double-line border. The word "Diploma" is centered at the top in a stylized, gothic font. Below it are three horizontal lines. At the bottom, there are two columns for "Signature" and "Date".

83

A diploma form with a double-line border. The word "Diploma" is centered in the middle. Below it are three horizontal lines. At the bottom, there are two columns for "Signature" and "Date".


84

A diploma form with a double-line border. The word "Diploma" is centered at the top. Below it are three horizontal lines. At the bottom, there are two columns for "Signature" and "Date".



85


World's Greatest Athlete



Signature _____ Date _____

86


World's Worst Athlete



Signature _____ Date _____

87

**POOR
SPORTSMANSHIP
AWARD**



Signature _____ Date _____

88

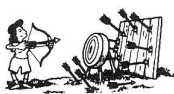
**SKIING
AWARD**



Signature _____
Date _____

89


**MARKSMANSHIP
AWARD**




Signature _____
Date _____

90

**FISHING
AWARD**




Signature _____
Date _____




91

**BASKETBALL
AWARD**




Signature _____
Date _____




92

Signature _____
Date _____




93




Signature _____ Date _____

94


FOOTBALL AWARD



Signature _____ Date _____




95



Signature _____ Date _____



96




Signature _____ Date _____

97


**BASEBALL
AWARD**



Signature _____
Date _____




98



Signature _____ Date _____


99




Signature _____ Date _____

100

**GYMNASTICS
AWARD**



Signature _____
Date _____



101

A rectangular award certificate template with a double-line border. On the right side, there is a line drawing of a gymnast performing a handstand on a pommel horse. To the left of the drawing are five horizontal lines for text. Below the drawing are five more horizontal lines. At the bottom left, there is a line for a signature and a line for a date.

102

A rectangular award certificate template with a double-line border. At the top, the words "GYMNASTICS" and "AWARD" are written in large, bold, block letters. Below the title is a line drawing of a gymnast performing a handstand on a pommel horse. Underneath the drawing are five horizontal lines for text. At the bottom right, there is a small line drawing of a pommel horse. At the bottom left, there is a line for a signature and a line for a date.

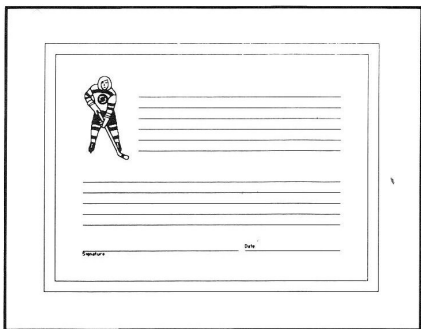
103

A rectangular award certificate template with a double-line border. On the left side, there is a line drawing of a gymnast performing a handstand on a pommel horse. To the right of the drawing are five horizontal lines for text. Below the drawing are five more horizontal lines. At the bottom left, there is a line for a signature and a line for a date.

104

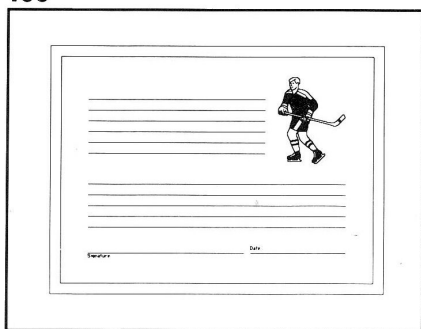
A rectangular award certificate template with a double-line border. At the top, the words "HOCKEY" and "AWARD" are written in large, bold, block letters. Below the title are two line drawings of hockey players in action. Underneath the drawings are five horizontal lines for text. At the bottom right, there is a small line drawing of a hockey puck. At the bottom left, there is a line for a signature and a line for a date.

105



A rectangular award certificate with a double-line border. On the left side, there is a line drawing of a tennis player in a ready stance. To the right of the player are five horizontal lines for text. Below these lines are two more horizontal lines, and at the bottom left, there are two short horizontal lines labeled "Signature" and "Date".

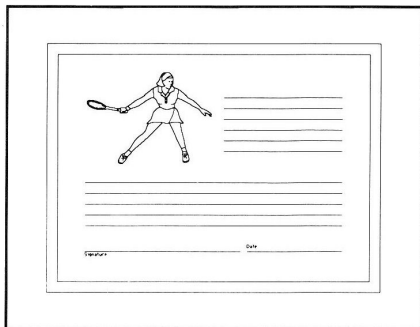
106



A rectangular award certificate with a double-line border. On the right side, there is a line drawing of a tennis player in a ready stance. To the left of the player are five horizontal lines for text. Below these lines are two more horizontal lines, and at the bottom left, there are two short horizontal lines labeled "Signature" and "Date".

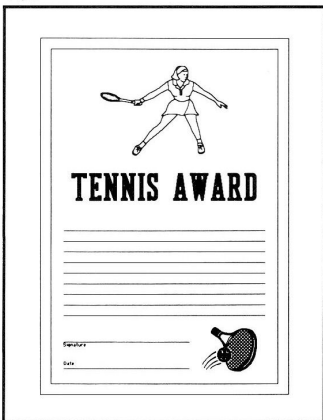


108



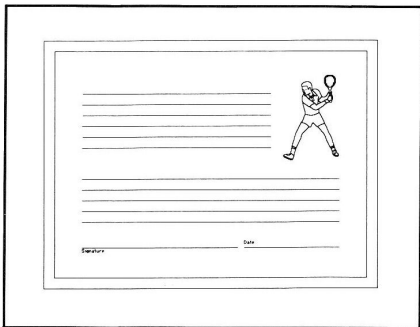
A rectangular award certificate with a double-line border. On the left side, there is a line drawing of a tennis player in a ready stance. To the right of the player are five horizontal lines for text. Below these lines are two more horizontal lines, and at the bottom left, there are two short horizontal lines labeled "Signature" and "Date".

107



A rectangular award certificate with a double-line border. At the top center is a line drawing of a tennis player in a ready stance. Below the drawing, the words "TENNIS AWARD" are printed in a bold, sans-serif font. Underneath the title are five horizontal lines for text. At the bottom left, there are two short horizontal lines labeled "Signature" and "Date". At the bottom right, there is a line drawing of a tennis racket.

109



A rectangular award certificate with a double-line border. On the right side, there is a line drawing of a tennis player in a ready stance. To the left of the player are five horizontal lines for text. Below these lines are two more horizontal lines, and at the bottom left, there are two short horizontal lines labeled "Signature" and "Date".

110


**TRACK & FIELD
AWARD**



Signature _____
Date _____




111



Signature _____ Date _____


112




Signature _____ Date _____

113

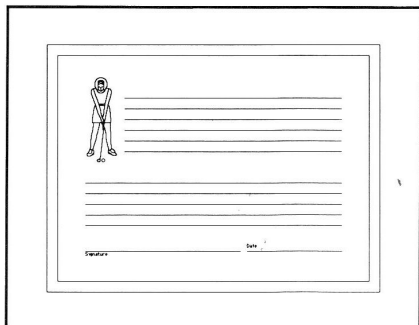
**GOLFING
AWARD**



Signature _____
Date _____

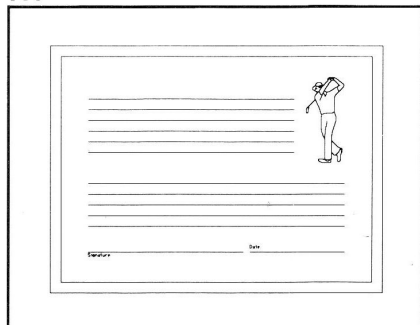


114

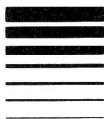


A rectangular award certificate with a double-line border. On the left side, there is a line drawing of a person standing with their arms crossed. To the right of the drawing are four horizontal lines for text. Below these lines are two more horizontal lines. At the bottom left, there is a label "Signature" followed by a line. At the bottom right, there is a label "Date" followed by a line.

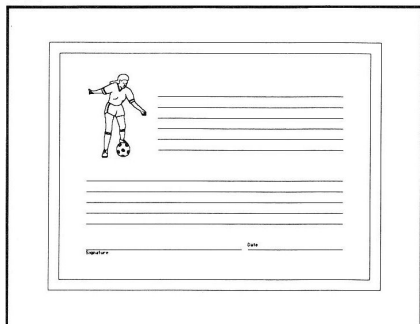
115



A rectangular award certificate with a double-line border. On the right side, there is a line drawing of a person standing with their arms raised. To the left of the drawing are four horizontal lines for text. Below these lines are two more horizontal lines. At the bottom left, there is a label "Signature" followed by a line. At the bottom right, there is a label "Date" followed by a line.

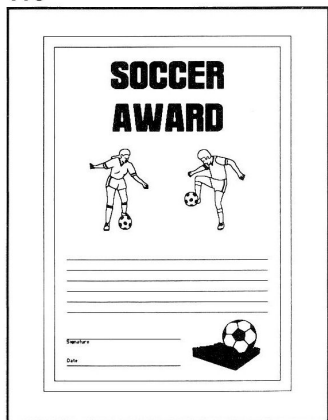


117



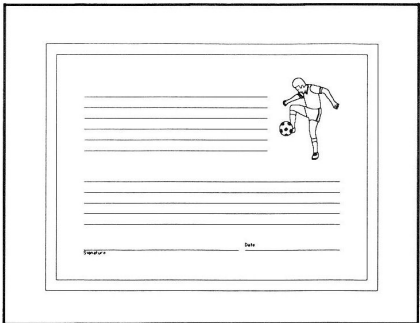
A rectangular award certificate with a double-line border. On the left side, there is a line drawing of a soccer player standing with a soccer ball at their feet. To the right of the drawing are four horizontal lines for text. Below these lines are two more horizontal lines. At the bottom left, there is a label "Signature" followed by a line. At the bottom right, there is a label "Date" followed by a line.

116



A rectangular award certificate with a double-line border. At the top center, the words "SOCCER" and "AWARD" are written in large, bold, black capital letters. Below the text are two line drawings of soccer players: one on the left with arms outstretched and a soccer ball at their feet, and one on the right kicking a soccer ball. Below the drawings are four horizontal lines for text. Below these lines are two more horizontal lines. At the bottom left, there is a label "Signature" followed by a line. At the bottom right, there is a label "Date" followed by a line. In the bottom right corner, there is a line drawing of a soccer ball on a small rectangular base.



118




A rectangular award certificate with a double-line border. On the right side, there is a line drawing of a soccer player in motion, kicking a soccer ball. To the left of the drawing are four horizontal lines for text. Below these lines are two more horizontal lines. At the bottom left, there is a label "Signature" followed by a line. At the bottom right, there is a label "Date" followed by a line.

119


BOWLING
AWARD



Date _____




120



Date _____



121




Date _____

122


RACQUETBALL
AWARD



Date _____

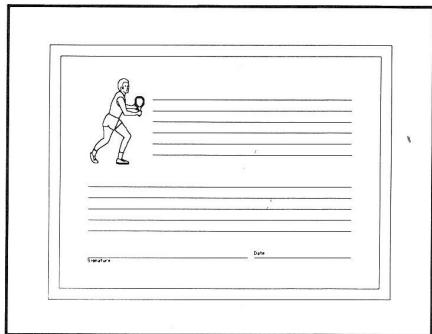


123



Date _____

124



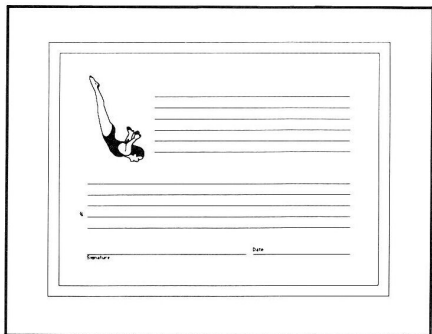
A rectangular award certificate template with a double-line border. On the left side, there is a line drawing of a person in athletic wear holding a trophy. To the right of the drawing are five horizontal lines for text. Below these lines are two more horizontal lines, with the word "Signature" on the left and "Date" on the right.

125



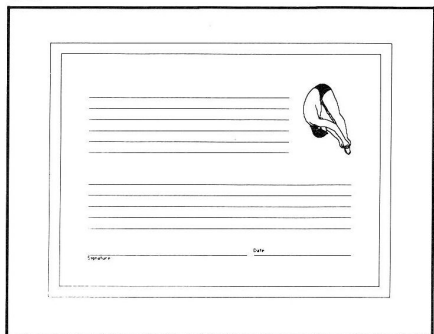
A rectangular award certificate template with a double-line border. At the top, the words "SWIMMING" and "AWARD" are written in large, bold, black capital letters. Below the text are two line drawings of swimmers in various strokes. A wavy line represents the water surface. Below the water line are five horizontal lines for text. At the bottom left, there are two horizontal lines with "Signature" and "Date" labels. At the bottom right, there is a circular logo featuring a stylized wave.

126



A rectangular award certificate template with a double-line border. On the left side, there is a line drawing of a swimmer in a butterfly stroke. To the right of the drawing are five horizontal lines for text. Below these lines are two more horizontal lines, with the word "Signature" on the left and "Date" on the right.


127



A rectangular award certificate template with a double-line border. On the right side, there is a line drawing of a swimmer in a butterfly stroke. To the left of the drawing are five horizontal lines for text. Below these lines are two more horizontal lines, with the word "Signature" on the left and "Date" on the right.

128

**GREATEST
BACKYARD CHEF**



Signature _____
Date _____

129

**CLEAN ROOM
AWARD**




Signature _____
Date _____



130


**Award for
Eating All Of
Your Yucky
Vegetables**



Signature _____
Date _____

131

**Certificate
of
Wedded Bliss**



Signature _____
Date _____


132

**ANNIVERSARY
AWARD**

RECIPIENT _____
DATE _____



133



*Newborn Baby
Award*

RECIPIENT _____
DATE _____

134

**Clean Teeth
Award**




RECIPIENT _____
DATE _____




135

**Gourmet
Chef Award**



RECIPIENT _____
DATE _____



136

CERTIFICATE OF LOVE

Signature _____
Date _____



138

ADOPTION CERTIFICATE

Signature _____
Date _____

137

Sweetheart Award


Signature _____
Date _____



140


Dog Owner's License

Signature _____
Date _____



139

IN THE DOGHOUSE




Signature _____
Date _____

141

Cat Owner's License

Signature _____
Date _____



142

*Bird Owner's
License*

Signature _____ 
Date _____

143

**BEST FRIENDS
CERTIFICATE**

Signature _____ 
Date _____

44

**BEST FRIENDS
CERTIFICATE**

Signature _____ 
Date _____

145

**BEST FRIENDS
CERTIFICATE**

Signature _____ 
Date _____

46

**BEST FRIENDS
CERTIFICATE**

Signature _____ 
Date _____

147

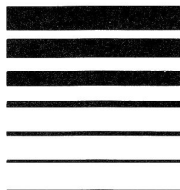
**BEST FRIENDS
CERTIFICATE**

Signature _____ 
Date _____

148


BEST FRIENDS
CERTIFICATE

Signature _____
Date _____




149

Signature _____
Date _____



150

Signature _____
Date _____



151

A certificate template with a double-line border. On the left side, there is a line drawing of a cow. To the right of the cow are two columns of horizontal lines for writing. At the bottom right, there are two short horizontal lines labeled "Name" and "Date".

152

A certificate template with a double-line border. On the right side, there is a line drawing of a dog sitting and holding a small object. To the left of the dog are two columns of horizontal lines for writing. At the bottom right, there are two short horizontal lines labeled "Name" and "Date".

153

A certificate template with a double-line border. On the left side, there is a line drawing of a camel. To the right of the camel are two columns of horizontal lines for writing. At the bottom right, there are two short horizontal lines labeled "Name" and "Date".

154

A certificate template with a double-line border. On the right side, there is a line drawing of a butterfly. To the left of the butterfly are two columns of horizontal lines for writing. At the bottom right, there are two short horizontal lines labeled "Name" and "Date".

155

A certificate template with a double-line border. At the top center, the text "GOOD GIRL AWARD" is printed in bold. Below the text are two horizontal lines for writing. At the bottom left, there are two short horizontal lines labeled "Name" and "Date". At the bottom right, there is a line drawing of a girl's face with a halo.


156

A certificate template with a double-line border. At the top center, the text "GOOD BOY AWARD" is printed in bold. Below the text are two horizontal lines for writing. At the bottom left, there are two short horizontal lines labeled "Name" and "Date". At the bottom right, there is a line drawing of a boy's face with a halo.

157

**BAD GIRL
AWARD**

Signature _____
Date _____



158

**BAD BOY
AWARD**

Signature _____
Date _____



159

**BEST MOM
AWARD**

Signature _____
Date _____



160


**BEST DAD
AWARD**

Signature _____
Date _____




161

Signature _____
Date _____



162

Signature _____
Date _____



163

A certificate form with a double-line border. It features five horizontal lines for writing. At the bottom left, there are two fields labeled "Signature" and "Date". To the right of these fields is a cartoon illustration of a white rabbit with long ears, sitting and facing right.

164

A certificate form with a double-line border. It features five horizontal lines for writing. At the bottom left, there are two fields labeled "Signature" and "Date". To the right of these fields is a cartoon illustration of a bee with a striped body and wings, facing left.

165

A certificate form with a double-line border. It features five horizontal lines for writing. At the bottom left, there are two fields labeled "Signature" and "Date". To the right of these fields is a circular logo containing a silhouette of a dog, with the text "OFFICIAL SEAL" below it.

166

A certificate form with a double-line border. It features five horizontal lines for writing. At the bottom left, there are two fields labeled "Signature" and "Date". To the right of these fields is a stylized black cross symbol.

167

A certificate form with a double-line border. It features five horizontal lines for writing. At the bottom left, there are two fields labeled "Signature" and "Date". To the right of these fields is an illustration of two crosses standing on a small mound of earth.

168

A certificate form with a double-line border. It features five horizontal lines for writing. At the bottom left, there are two fields labeled "Signature" and "Date". To the right of these fields is an illustration of a dove with its wings spread, perched on a globe.

169

A rectangular certificate form with a double-line border. Inside, there are five horizontal lines for writing. At the bottom left, there are two short horizontal lines labeled "Signature" and "Date". To the right of these lines is a triquetra symbol, a three-lobed knot.

170

A rectangular certificate form with a double-line border. Inside, there are five horizontal lines for writing. At the bottom left, there are two short horizontal lines labeled "Signature" and "Date". To the right of these lines is a simple line drawing of a fish.

171

A rectangular certificate form with a double-line border. Inside, there are five horizontal lines for writing. At the bottom left, there are two short horizontal lines labeled "Signature" and "Date". To the right of these lines is a simple line drawing of a cross.

172

A rectangular certificate form with a double-line border. Inside, there are five horizontal lines for writing. At the bottom left, there are two short horizontal lines labeled "Signature" and "Date". To the right of these lines is a simple line drawing of a menorah with seven lit candles.

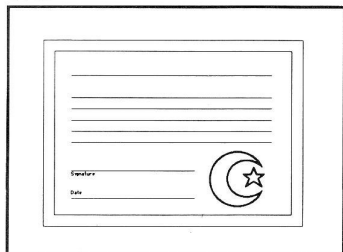
173

A rectangular certificate form with a double-line border. Inside, there are five horizontal lines for writing. At the bottom left, there are two short horizontal lines labeled "Signature" and "Date". To the right of these lines is a simple line drawing of a Torah scroll.

174

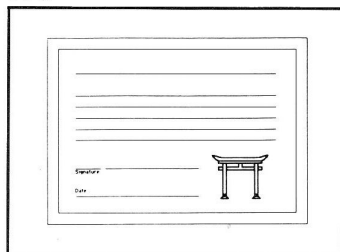
A rectangular certificate form with a double-line border. Inside, there are five horizontal lines for writing. At the bottom left, there are two short horizontal lines labeled "Signature" and "Date". To the right of these lines is a simple line drawing of a Star of David (Magen David).

175



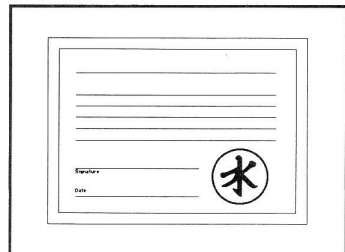
A rectangular certificate form with a double-line border. The interior contains five horizontal lines for text. At the bottom left, there are two short horizontal lines labeled "Signature" and "Date". To the right of these lines is a circular emblem containing a crescent moon and a five-pointed star.

176



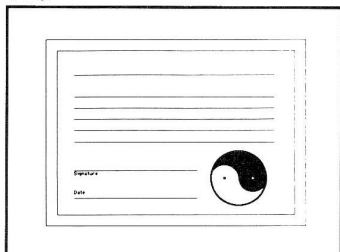
A rectangular certificate form with a double-line border. The interior contains five horizontal lines for text. At the bottom left, there are two short horizontal lines labeled "Signature" and "Date". To the right of these lines is a stylized Shinto torii gate.

177



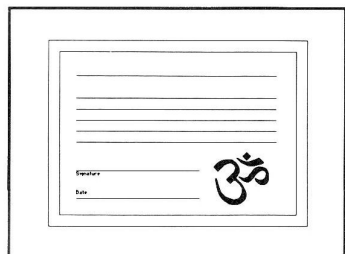
A rectangular certificate form with a double-line border. The interior contains five horizontal lines for text. At the bottom left, there are two short horizontal lines labeled "Signature" and "Date". To the right of these lines is a circular emblem containing a stylized Buddhist symbol, possibly a vajra or a similar sacred object.

178



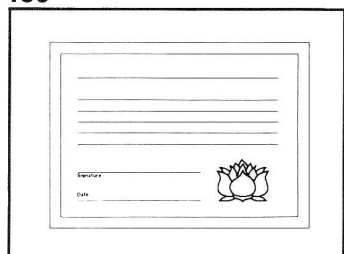
A rectangular certificate form with a double-line border. The interior contains five horizontal lines for text. At the bottom left, there are two short horizontal lines labeled "Signature" and "Date". To the right of these lines is a circular emblem containing a yin-yang symbol.

179

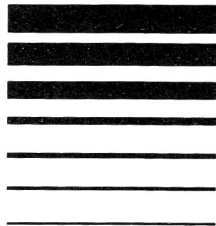


A rectangular certificate form with a double-line border. The interior contains five horizontal lines for text. At the bottom left, there are two short horizontal lines labeled "Signature" and "Date". To the right of these lines is a stylized Hindu Om symbol.

180



A rectangular certificate form with a double-line border. The interior contains five horizontal lines for text. At the bottom left, there are two short horizontal lines labeled "Signature" and "Date". To the right of these lines is a stylized lotus flower.



181

A certificate form with a double-line border. Inside, there are four horizontal lines for text. At the bottom left, there are two lines labeled "Signature" and "Date". At the bottom right, there is a decorative starburst emblem.

General Awards

Disk 2

Side B

182

Certificate of Merit. The text "Certificate of Merit" is centered at the top in a decorative font. Below it are four horizontal lines for text. At the bottom left, there are two lines labeled "Signature" and "Date". At the bottom right, there is a five-pointed star.

183

Certificate of Achievement. The text "Certificate of Achievement" is centered at the top in a decorative font. Below it are four horizontal lines for text. At the bottom left, there are two lines labeled "Signature" and "Date". At the bottom right, there is an illustration of a lit torch.

184

Certificate of Excellence. The text "Certificate of Excellence" is centered at the top in a decorative font. Below it are four horizontal lines for text. At the bottom left, there are two lines labeled "Signature" and "Date". At the bottom right, there is a rectangular seal with the word "Perfection" written in a cursive font.

185

Certificate of Appreciation. The text "Certificate of Appreciation" is centered at the top in a decorative font. Below it are four horizontal lines for text. At the bottom left, there are two lines labeled "Signature" and "Date". At the bottom right, there is an illustration of two hands shaking, symbolizing agreement or appreciation.

186

Certificate
of
Recognition

Signature _____
Date _____



187

Certificate
of
Attendance

Signature _____
Date _____

188

Certificate
of
Membership

Signature _____
Date _____

189

Certificate
of
Participation

Signature _____
Date _____

190

Certificate
of
Completion

Signature _____
Date _____

191

Certificate
of
Improvement

Signature _____
Date _____

192

Certificate
of
Proficiency

Signature _____
Date _____

193

Certificate
of
Performance

Signature _____
Date _____

194

Certificate
of

Signature _____
Date _____

195

Certificate
of

Signature _____
Date _____

196

Certificate of

Signature _____
Date _____

197

Award
For
First Place

Signature _____
Date _____



198

Award
For
Second Place

Winner _____
Date _____



199

Award
For
Third Place


Winner _____
Date _____



200

Honorable
Mention

Winner _____
Date _____



201

Award for
Best Idea


Winner _____
Date _____



202

EFFICIENCY
AWARD

Winner _____
Date _____



203

Citizenship
Award

Winner _____
Date _____



204

A rectangular award certificate with a double-line border. The word "Award" is centered in a bold, serif font. Below it are four horizontal lines for text. At the bottom left, there are two lines labeled "Signature" and "Date". At the bottom right is a circular seal with a central emblem and text around the perimeter.

205

A rectangular award certificate with a double-line border. The word "Award" is centered in a bold, serif font. Below it are four horizontal lines for text. At the bottom left, there are two lines labeled "Signature" and "Date".

206

A rectangular award certificate with a double-line border. The word "AWARD" is centered in a large, bold, all-caps serif font. Below it are six horizontal lines for text. At the bottom left, there are two lines labeled "Signature" and "Date".

207

A rectangular award certificate with a double-line border. The words "Award" and "for" are centered in a bold, serif font. Below them are four horizontal lines for text. At the bottom left, there are two lines labeled "Signature" and "Date".

208

A rectangular award certificate with a double-line border. The words "Award for" are centered in a bold, serif font. Below them are four horizontal lines for text. At the bottom left, there are two lines labeled "Signature" and "Date".

209

A rectangular award certificate with a double-line border. The words "JOB WELL DONE" are centered in a large, bold, all-caps serif font. Below them are four horizontal lines for text. At the bottom left, there are two lines labeled "Signature" and "Date". At the bottom right is a ribbon-style seal with a central emblem and text.

210

LICENSE

Signature _____
Date _____

211

License

Signature _____
Date _____



213

Thank You

Signature _____
Date _____

212

License

Signature _____
Date _____

214

Congratulations

Signature _____
Date _____

215

MOST LIKELY TO

Signature _____
Date _____


216

BEST SUGGESTION

Signature _____
Date _____


217

Signature _____
Date _____



218

Signature _____
Date _____

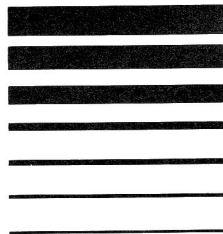


219

Signature _____
Date _____

220

Signature _____
Date _____



Limited Warranty

Springboard Software, Inc., warrants this software product against defects in manufacturing for a period of thirty days following purchase. If during that period, you cannot properly load the program, you may return it with proof-of-purchase date to Springboard for a replacement. After thirty days a replacement can be obtained by sending the original product and \$5.00 to the manufacturer, provided that the software is then being manufactured by the manufacturer.

Returns should be sent to: Springboard Software, Inc., 7808 Creekridge Circle, Minneapolis, MN 55435.

THIS LIMITED WARRANTY IS IN LIEU OF ALL OTHER WARRANTIES. ANY IMPLIED WARRANTIES, INCLUDING ANY WARRANTIES OF MERCHANTABILITY OR FITNESS FOR A PARTICULAR PURPOSE, WHICH ARE NOT SO EXCLUDED ARE LIMITED IN DURATION TO THE DURATION OF THIS LIMITED WARRANTY.

THE MANUFACTURER IS NOT RESPONSIBLE FOR ANY INCIDENTAL OR CONSEQUENTIAL DAMAGES CAUSED BY THE USE OF THIS SOFTWARE PRODUCT, AND IN ANY CASE THE MANUFACTURER'S LIABILITY FOR ANY CLAIM REGARDING THIS SOFTWARE PRODUCT IS LIMITED TO ITS PURCHASE PRICE.

Some states do not allow limitations on how long an implied warranty lasts, so the above limitation may not apply to you. Some states do not allow exclusion or limitation of incidental or consequential damages, so the above exclusion may not apply to you. This warranty gives you specific rights, and you may also have other rights which vary from state to state.

1986 Springboard Software, Inc.
7808 Creekridge Circle
Minneapolis, MN 55435
All rights reserved.

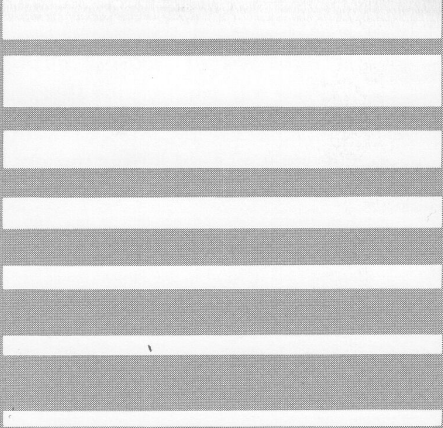
1986 Springboard Certificates cannot be used for any commercial products without the written consent of Springboard Software, Inc.

Apple II +, IIe, IIc, IIgs, and ProDOS are trademarks of Apple Computer, Inc.

Springboard Software, Inc.
7808 Creekridge Circle
Minneapolis, MN 55345
Technical Support Hotline: (612) 944-3912

Springboard Software, Inc.
7808 CreekrIDGE Circle
Minneapolis, Minnesota 55435

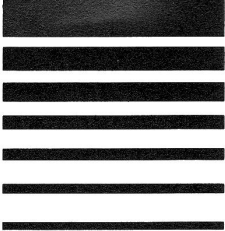




DISCOVER

The Possibilities

WARRANTY REGISTRATION
AND
BACKUP ORDER CARD



Thank you for choosing Springboard programs. When you send in your Warranty Registration card you become an official Springboard customer. That means you are entitled to these special customer benefits.

Springboard Gives You Product Support You Can Count On

Customer Support Hotline

If you have a question, we're here to help you. Most questions should be answered in the instruction manual. If not, you can call our customer support staff at **(612) 944-3912**. It helps if you have your program running on your computer when you call.

Money-Back Guarantee

If you're not satisfied within 30 days of purchasing this Springboard product, we'll refund your money. Simply return the package, its contents and your sales or shipping receipt for a prompt refund.

Lifetime Replacement Policy

By filling out and returning the Warranty Registration card, you are eligible for a Lifetime Replacement Policy. At any time a FREE replacement for a defective disk can be obtained from Springboard. Send the original disk set to avoid compatibility problems along with \$5.00 to cover postage and handling. Springboard will promptly send out your replacement provided that the software is still being manufactured at the time.

Backup Policy

This Springboard program is copy-protected and cannot be duplicated. If you try to duplicate this program you may damage your software. Purchasing a backup from Springboard is the best way to protect your software investment. To order a backup, see the attached Backup Order Card.

New Product Information

Springboard is always up to something new. You can keep informed of new products and of updates to products you have purchased by returning your Warranty Registration card.

Name _____ Age _____ Sex M F

Street Address _____ Phone () _____

City _____ State _____ Zip _____ Date Purchased _____

Title of Product Purchased

- | | | | |
|---|--|---|--|
| 21 <input type="checkbox"/> Certificate Library | 09 <input type="checkbox"/> Clip Art Coll. Vol. 3 | 05 <input type="checkbox"/> Fraction Factory | 04 <input type="checkbox"/> Piece of Cake Math |
| 20 <input type="checkbox"/> Certificate Maker | 01 <input type="checkbox"/> Early Games for Young Children | 25 <input type="checkbox"/> Graphics Expander | 15 <input type="checkbox"/> Puzzle Master |
| 07 <input type="checkbox"/> Clip Art Coll. Vol. 1 | | 14 <input type="checkbox"/> Mask Parade | 16 <input type="checkbox"/> Rainbow Painter |
| 08 <input type="checkbox"/> Clip Art Coll. Vol. 2 | 02 <input type="checkbox"/> Easy as ABC | 06 <input type="checkbox"/> The Newsroom | 03 <input type="checkbox"/> Stickers |

Type of Hardware

- | | |
|--|--|
| 01 <input type="checkbox"/> Apple II & compatibles | 09 <input type="checkbox"/> Atari |
| 11 <input type="checkbox"/> Apple IIgs | R <input type="checkbox"/> Mouse |
| 02 <input type="checkbox"/> IBM/Tandy & comp. | F <input type="checkbox"/> Floppy Disk Drive |
| 03 <input type="checkbox"/> Commodore | H <input type="checkbox"/> Hard Disk Drive |
| 04 <input type="checkbox"/> Macintosh | |

Disk Size

- | | |
|---|--------------------------------------|
| P <input type="checkbox"/> Dot Matrix Printer | 01 <input type="checkbox"/> 3½" Disk |
| S <input type="checkbox"/> Speed-up Card | 02 <input type="checkbox"/> 5¼" Disk |
| L <input type="checkbox"/> Laser Printer | |
| 99 <input type="checkbox"/> Other _____ | |

Are you satisfied with your purchase? Yes _____ No _____ Comments _____

\$ _____ Price Paid

Where Purchased

- | | | | |
|--|---|--|---|
| 01 <input type="checkbox"/> Computer Chain Store | 03 <input type="checkbox"/> Toy Store | 06 <input type="checkbox"/> Discount Store | 09 <input type="checkbox"/> Direct from Springboard |
| 02 <input type="checkbox"/> Independent Computer Store | 04 <input type="checkbox"/> Software Only Store | 07 <input type="checkbox"/> Mail Order | |
| | 05 <input type="checkbox"/> Department Store | 08 <input type="checkbox"/> Other _____ | |

Reason for Purchase

- | | | | |
|---|---|--|---|
| 11 <input type="checkbox"/> Home Use (Personal) | 21 <input type="checkbox"/> School Use (K-8) | 23 <input type="checkbox"/> School Use (College) | 31 <input type="checkbox"/> Business Office Use |
| 12 <input type="checkbox"/> Home Use (Business) | 22 <input type="checkbox"/> School Use (9-12) | 24 <input type="checkbox"/> School Adm. Use | 32 <input type="checkbox"/> Non-profit Organization Use |

Detach Here

You have purchased a copy-protected program. To order a backup copy of the program, just complete the following 4 steps. Your backup will be shipped promptly.

1.

Please return the Warranty Registration card for the program you purchased with this order card.

2.

To receive the correct backup, please fill out this card and your Warranty Registration completely.

3.

Enclose your proof-of-purchase of the Springboard program. Keep a copy for your records.

4.

Enclose a check or money order for \$12.00 payable to Springboard Software.

Name _____

Address _____

City _____ State _____ Zip _____

Phone () _____ Date Purchased _____

Product Title _____

Computer Format _____ Disk Size 3½" 5¼"



NO POSTAGE
NECESSARY
IF MAILED
IN THE
UNITED STATES

BUSINESS REPLY CARD

FIRST CLASS PERMIT NO. 19365 MINNEAPOLIS, MN USA

POSTAGE WILL BE PAID BY ADDRESSEE

Springboard Software, Inc.
Attention: Warranty Registration
7808 Creekrige Circle
Minneapolis, MN 55435-9805

